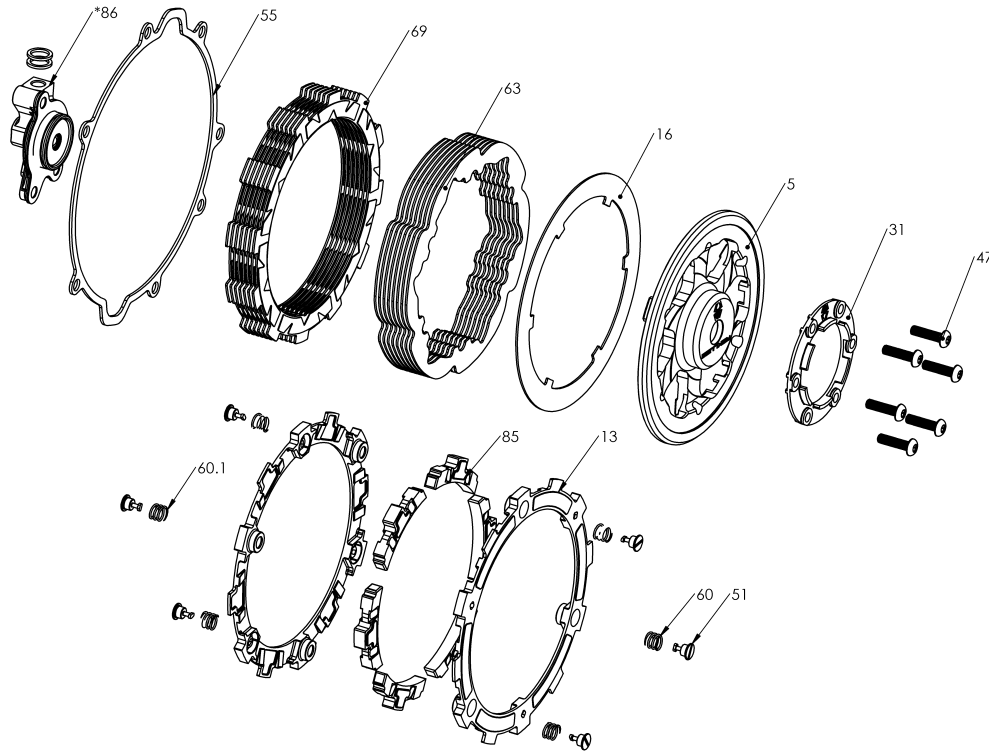


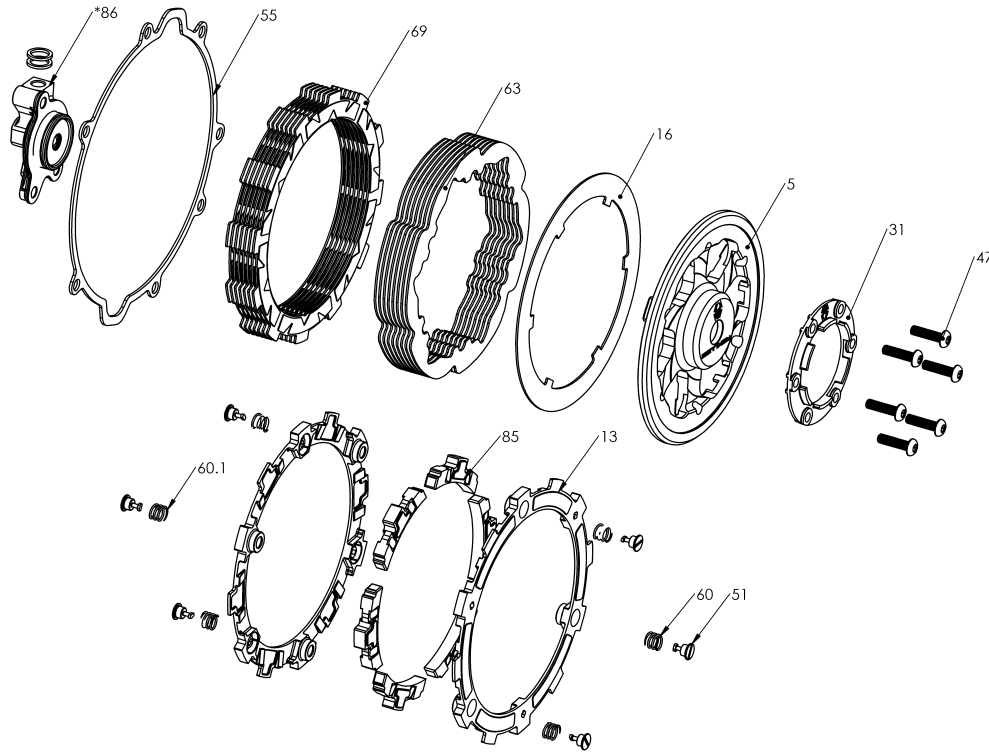
RMS-6313086C - RADIUSX CLUTCH (DDS)



**SLAVE CYLINDER ASSEMBLY FICHE CAN BE VIEWED SEPARATELY.
REBUILD KIT ALSO AVAILABLE SEPERATELY FROM REKLUSE.*

| Item | Part Number | Item Description | Qty |
|-----------|-------------|---|-----|
| 5 | 113-023B | PRESSURE PLATE - EXP - KTM DDS 16+ | 1 |
| 13 | 140-215B | EXP 3.0 BASE - KT350 | 2 |
| 16 | 143-025A | RADIUS X LINING PLATE - KTM | 1 |
| 31 | 184-015A | PRESSURE RING SPACER - Pressure Ring Spacer for KTM 12+ | 1 |
| 47 | 411-154A | FASTENER - M5 x 20 Button-Head T-25 Torx Screw 10.9 | 6 |
| Not Shown | 411-906 | HARDWARE - T-25 Torx Bit | 1 |
| 51 | 415-000 | FASTENER - Quarter Turn Pin | 6 |
| Not Shown | 415-000 | FASTENER - Quarter Turn Pin | 2 |
| Not Shown | 419-120 | HARDWARE - 1 Orange Free Play Gain Rubber Band | 1 |
| 55 | 420-086A | GASKET - KTM 250-300 2T 2-Stroke - .060 | 1 |
| 60 | 442-001 | EXP ADJUSTMENT SPRING EXP - Light (Silver) | 3 |
| Not Shown | 442-001 | EXP ADJUSTMENT SPRING EXP - Light (Silver) | 3 |
| 60.1 | 442-007A | EXP ADJUSTMENT SPRING EXP - 2LB (Steel) | 3 |
| Not Shown | 442-007A | EXP ADJUSTMENT SPRING EXP - 2LB (Steel) | 3 |
| 63 | 460-610B | DRIVE PLATE - 0.040 Wavy - KT 6-pin | 8 |

RMS-6313086C - RADIUSX CLUTCH (DDS)



**SLAVE CYLINDER ASSEMBLY FICHE CAN BE VIEWED SEPARATELY.
REBUILD KIT ALSO AVAILABLE SEPERATELY FROM REKLUSE.*

| Item | Part Number | Item Description | Qty |
|----------|-------------|---|-----|
| 69 | 469-336A | FRICITION DISK - KT350 TORQ-DRIVE - 2-Segment Pads | 7 |
| 85 | 741-015B | EXP 3.0 WEDGE ASSEMBLY - KT350 - Heavy | 6 |
| 86 | 742-026D | ADJUSTABLE SLAVE CYLINDER ASSEMBLY - Housing-122, Pis | 1 |
| 28 | 180-107 | SLAVE CYLINDER ADJUSTER - Screw, M6x7mm | 1 |
| 28.1 | 180-122B | SLAVE CYLINDER HOUSING - KT350 Adjustable Slave Cylinde | 1 |
| 28.2 | 180-230A | SLAVE CYLINDER PISTON - DIV 1.5 | 1 |
| 50 | 414-238 | HARDWARE - 2 x 8mm Crush Washers | 2 |
| 53 | 418-804 | HARDWARE - 021 EPDM X Ring Black | 1 |
| 53.1 | 418-907 | HARDWARE - 011 EPDM O-ring | 2 |
| 53.2 | 418-915A | HARDWARE - BUNA O-ring, size 30mmID x 1.5mmW, Black | 1 |
| 53.3 | 418-917A | HARDWARE - 1.5x24mm Viton O-ring, 75Dur | 1 |
| Not Show | 419-104 | HARDWARE - 15 in L X 1/4OD. X .17ID. Clear Vinyl Tube | 1 |
| 55.1 | 420-303A | GASKET - Slave Cylinder - Brembo - fits 180-122 | 1 |
| 56 | 431-304 | BALL BEARING - 1/4in Chrome Steel Ball | 1 |